

The Lewis & Clark Trail *en Plein Aire* 2010

Sponsored by The Montana Professional Artists Association

The 2010 Lewis & Clark Trail en Plein Aire is scheduled for October 7-10, 2010 and will create an experience for plein aire artists, from beginner to advanced, and in any painting or drawing medium.

Artists can paint at their choices of premier locations including mountains, streams and rivers in fall color. Wildlife is plentiful along the way, rivers and lakes reflect fall colors and the wild Montana skies are constantly changing. Local guides and maps of the best areas will be available to the artists. Places to paint include the Metcalf Wildlife Refuge, multiple Bitterroot River access areas and bridges, two park locations, the historic downtown area of Hamilton and the grounds of the Historic Marcus Daly Mansion.

Artists will submit a non-refundable registration fee of \$50 payable to the Montana Professional Artists Association, Inc. or MPAA, (**we cannot take credit cards**) for registration and inclusion of two officially stamped entries into the juried show at Art Focus Gallery in Hamilton, MT. This includes 2 days of plein air painting with guides to the best painting locations. Additional canvases or papers can be stamped, however, only two can be submitted for jurying. Submitting art for the juried show is NOT mandatory, but you may still want a juror's critique of your work.

The Lewis and Clark Trail is limited to 100 artists working in all painting and drawing mediums, but work must be done completely "en plein air" without the assistance of photography.

Artists must check in at the Art Focus Gallery between 7am and 4pm Thursday October 7, or between 7am and 1pm Friday, October 8. Painting surfaces (supplied by the artists) can be stamped at the Art Focus Gallery or at the Paper Clip (art supply store) across the street. Artists can have as many painting surfaces stamped as desired, but only two can be entered in the show. **ONLY STAMPED PIECES CAN BE ACCEPTED FOR THE SHOW.**

Your submissions, priced, framed (frames supplied by artists) and ready-to-hang artwork entries (no saw tooth hangers) will be submitted to the Art Focus Gallery, 215 W. Main, Hamilton, before 5pm Saturday, October 9. Jurying will take place after 5pm Saturday October 9. The artists' reception, show and sale will be 1pm - 4pm. Sunday, Oct. 10, at Art Focus Gallery.

Artists are responsible for pricing their artwork, including a 30% sales commission. All sales will be conducted through the Art Focus Gallery and shall remain on display until 4pm Sunday, October 10. Artists are responsible for picking up their artwork.



For more information, see "Plein Aire" at:

www.MontanaProfessionalArtistsAssoc.com

Montana Professional Artists Association

MPAA has been enriching Montana through the arts since it was founded by a small core of Montana Artists in 1993. As a group today, we strive to bring fine artists from all over Montana into communities to promote the arts. As individuals we have given our work and our talents over to community schools, charities and public works. We volunteer our expertise as professionals to schools whose arts programs have been cut or marginalized by budget restraints. Most charities have reaped the benefit of using fine arts as fund raisers. Public places have been enhanced by the arts. The group is comprised of chosen professionals across the state of Montana.

ABOUT THE JUROR - Robert Neaves

Robert is a third generation Montanan and a full-time professional artist. He has a national reputation, being featured in Who's Who in the American West and having won numerous best of Show awards in Chicago, Kansas City, Cheyenne, El Paso and Montana. His work has been exhibited in prestigious shows and museums; among them the Carl-Schurz-Haus in Freiburg, Germany, the Joslyn Art Museum in Omaha, NE, the Old West Museum in Cheyenne, WY and the C.M. Russell Museum in Great Falls, MT.

The Museum of the Rockies in Bozeman, MT, devoted its main gallery for a five month exhibit of Robert's series of historical paintings entitled "MONTANA PORTRAITS - the First 100 Years", His paintings and prints are in permanent collections throughout the USA and Europe.

Robert's formal training was acquired at the Art Institute of Chicago and the University of Montana. He worked as an illustrator for ITT in New Jersey, and as the regional art director for the Forest Service in Missoula, MT. Robert has been painting independently since 1983. He lived in Germany for two years and still travels throughout Europe studying art and culture.

Robert owns the Art Focus Gallery in Hamilton, MT - awarded the Ravalli Republic's public survey Best Art Gallery 3 years in a row.

Calendar 2010

Saturday September 11		Final postmarked date for ALL entries
Wednesday September 15		Final notification via email (USPS if needed) sent to Artists
Thursday October 7	7am-4pm	Artists paper and canvas (supplied by the artists) stamped at Art Focus and the Paper Clip
	All Day	Artists paint at valley locations
Friday October 8	7am-5pm	Artists paper and canvas (supplied by the artist) stamped at Art Focus and the Paper Clip
	All Day til 5pm	Artists paint at valley locations
Saturday October 9	Up to 5 pm	Artists check in two framed entries at Art Focus Gallery
Sunday October 10	Noon	Juror Robert Neaves presentation
	1pm-4pm	Plein Air Art Show and Sale-Art Focus Gallery

Artists will be notified upon receipt of \$50 payment up to September 15 with verification of registration by email (USPS if needed).

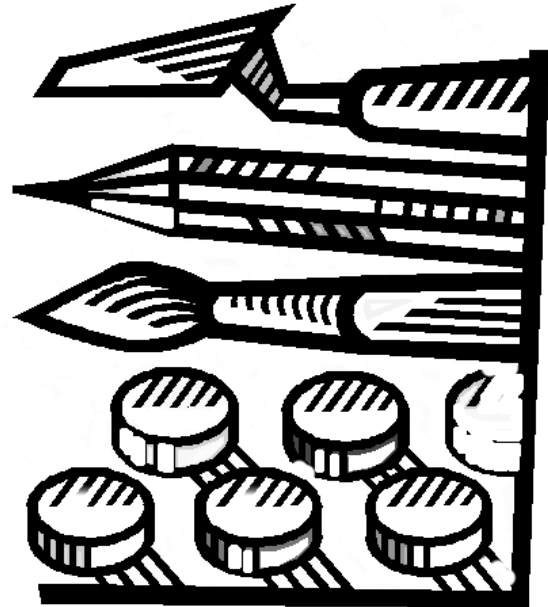
The Lewis and Clark Trail en Plein Air will be held rain or shine. In case of rain, dry or indoor locations will be suggested.

Important

Although September 11 is the deadline for sign-up, we are only accepting the first 100 artists so sign up early!! Make your accommodation reservations as soon as possible.

Upon receipt of your \$50 fee, you will receive a list of accommodations, restaurants and map.

October weather is generally mild with cool mornings and nights. Layered clothing is best. Average daytime temperatures range in the high 50's to 70 degrees. Nights are high 30s to 40s. Be prepared for these variations.



Montana Professional Artists Association

The Lewis & Clark Trail *en Plein Air*

2010 ENTRY FORM

Check List

_____ Completed and signed entry form

_____ \$50 non-refundable fee. Make check payable to the Montana Professional Artists Association, Inc (MPAA) (No credit cards)

Please print information clearly.

Name _____

Address _____

City State Zip _____

Phone _____

E-mail _____

By entering the Lewis and Clark Trail Plein Air, I affirm that I have read the prospectus and by signing the entry form I agree to abide by its terms. I will participate in both the plein air paint-out and the exhibit/sale. The Art Focus Gallery will handle all sales of artwork produced during the event until it closes October 10, 2010. A 30% commission on all Lewis and Clark Trail works sold will be retained.

MPAA assumes no responsibility for lost, damaged or stolen items. The undersigned discharges the Lewis and Clark Trail Paint out, MPAA and Art Focus Gallery of any and all claims, damages and suits from damages or loss to the undersigned's property during the event. The undersigned agrees to abide by the rules established by the Lewis and Clark Trail committee. Anyone not in compliance will be suspended from future participation and is subject to removal with no refund of registration fee.

Signature

Date

SEND TO: MPAA – Lewis and Clark Trail,
226 Peaceful Drive
Hamilton, MT 59840

Email: info@montanaprofessionalartistsassoc.com

Phone: (406) 961-3887 (406) 777-0553