

The Lewis & Clark Trail *en Plein Aire 2010*

Sponsored by The Montana Professional Artists Association

The 2010 Lewis & Clark Trail en Plein Aire is scheduled for October 7-10, 2010 and will create an experience for plein aire artists, from beginner to advanced, and in any painting or drawing medium.

Artists can paint at their choices of premier locations including mountains, streams and rivers in fall color. Wildlife is plentiful along the way, rivers and lakes reflect fall colors and the wild Montana skies are constantly changing. Local guides and maps of the best areas will be available to the artists. Places to paint include the Metcalf Wildlife Refuge, multiple Bitterroot River access areas and bridges, two park locations, the historic downtown area of Hamilton and the grounds of the Historic Marcus Daly Mansion.

Artists will submit a non-refundable registration fee of \$50 payable to the Montana Professional Artists Association, Inc. or MPAA, (**we cannot take credit cards**) for registration and inclusion of two officially stamped entries into the juried show at The Frame Shop in Hamilton, MT. This includes 2 days of plein air painting with maps to the best painting locations. Additional canvases or papers can be stamped, however, only two can be submitted for jurying. Submitting art for the juried show is NOT mandatory, but you may still want a juror's critique of your work.

The Lewis and Clark Trail is limited to 100 artists from any state working in all painting and drawing mediums, but work must be done completely "en plein air" without the assistance of photography.

Artists must check in at The Frame Shop between 7am and 4pm Thursday October 7, or between 7am and 1pm Friday, October 8. Painting surfaces (supplied by the artists) can be stamped at The Frame Shop. Artists can have as many painting surfaces stamped as desired, but only two can be entered in the show. **ONLY STAMPED PIECES CAN BE ACCEPTED FOR THE SHOW.** Artists may want to attend a meet and greet on Wednesday night at 6:00 PM at The Frame Shop, 325 W. Main, Hamilton, MT Canvas and paper may also be stamped and maps obtained for the paint out. It will be an opportunity to meet other participants.

Your submissions, priced, framed (frames supplied by artists) and ready-to-hang artwork entries (no saw tooth hangers) will be submitted to The Frame Shop, 325 W. Main, Hamilton, by 6:00 PM Friday, October 8. Jurying will take place after 6pm. The artists' reception, show and sale will take place Saturday October 9 opening at 6:00PM at The Frame Shop and will remain on display **for the month of October**.



For more information, see "Plein Aire" at:

www.MontanaProfessionalArtistsAssoc.com

Artists are responsible for pricing their artwork, including a 30% sales commission. All sales will be conducted through The Frame Shop. Artists are responsible for picking up their artwork.

Montana Professional Artists Association

MPAA has been enriching Montana through the arts since it was founded by a small core of Montana Artists in 1993. As a group today, we strive to bring fine artists from all over Montana into communities to promote the arts. As individuals we have given our work and our talents over to community schools, charities and public works. We volunteer our expertise as professionals to schools whose arts programs have been cut or marginalized by budget restraints. Most charities have reaped the benefit of using fine arts as fund raisers. Public places have been enhanced by the arts. The group is comprised of chosen professionals across the state of Montana.

ABOUT THE JUROR - Michele Kapor

Michele Kapor, a native of Montana, has been a student of the landscape all her life. The interplay of light, color and shadow are all passionately deployed in her exquisite paintings of rural and mountainous areas. Growing up in a ranching family instilled a love of the land and an appreciation for its beauty that has endured. She is a world traveler and spent some years in the travel industry after graduating with a bachelor of arts degree at Arizona State University. It gave her an opportunity to travel throughout the United States and many parts of the world where she visited museums to study and experience the art, the landscapes and the light the European and American masters painted.

In 1980, Kapor returned to Montana to devote all of her time to her painting. She has participated in national art shows throughout the west including: American Miniatures – settlers West, Montana Land Reliance Show, C.M. Russell Art Show & Auction, National Western Art Show, American Heart Association Invitational – Palm Springs, Montana Professional Art Association shows, as well as many public and private shows throughout Montana, Minnesota, Illinois, Texas and Arizona. She is currently vice-president of MPAA.

Calendar 2010

| | | |
|------------------------|----------------------------|--|
| Saturday September 11 | | Final postmarked date for ALL entries |
| Wednesday September 15 | | Final notification via email (USPS if needed) sent to Artists Wednesday evening, join us for a Meet and Greet at The Frame Shop, 325 W. Main, Hamilton at 6:00PM Stamp grounds & collect maps for an early start, meet cohorts in Plein Air! |
| Thursday October 7 | 7am-4pm All Day | Artists paper and canvas (supplied by the artists) stamped at The Frame Shop Artists paint at valley locations |
| Friday October 8 | 7am-5pm All Day til 5pm | Artists paper and canvas (supplied by the artist) stamped at The Frame Shop Artists paint at valley locations Check in two framed or ready to hang paintings by 6:00PM |
| Saturday October 9 | 10am 11:15am 6pm | Juror Michele Kapor talk & discussion Picturesque presentation for those interested in digital and making prints. Artists paint on locations as desired Reception for show and sale at The Frame Shop |

Artists will be notified upon receipt of \$50 payment up to September 15 with verification of registration by email (USPS if needed).

The Lewis and Clark Trail en Plein Air will be held rain or shine. In case of rain, dry or indoor locations will be suggested.

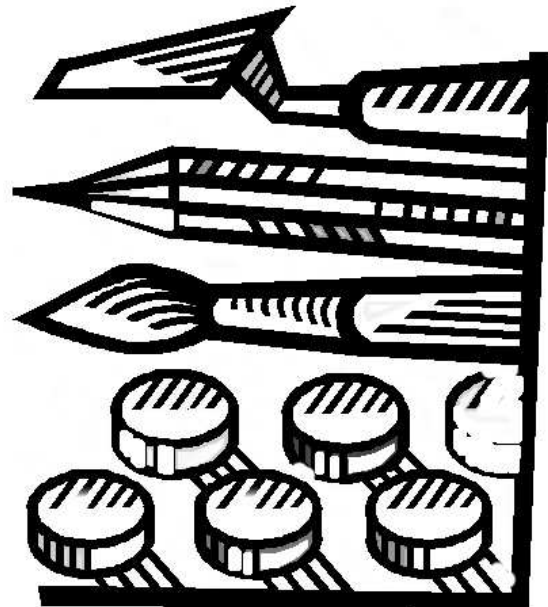
Important

Although September 11 is the deadline for sign-up, we are only accepting the first 100 artists so sign up early!! Make your accommodation reservations as soon as possible.

Upon receipt of your \$50 fee, you will receive a list of accommodations, restaurants and map.

October weather is generally mild with cool mornings and nights. Layered clothing is best. Average daytime temperatures range in the high 50's to 70 degrees. Nights are high 30s to 40s. Be prepared for these variations.

There are over 500 invitations sent for the reception. There is a Juror's Award, as well.



Montana Professional Artists Association

The Lewis & Clark Trail *en Plein Air*

2010 ENTRY FORM

Check List

_____ Completed and signed entry form

_____ \$50 non-refundable fee. Make check payable to the Montana Professional Artists Association, Inc (MPAA) (No credit cards)

Please print information clearly.

Name _____

Address _____

City State Zip _____

Phone _____

E-mail _____

By entering the Lewis and Clark Trail Plein Air, I affirm that I have read the prospectus and by signing the entry form I agree to abide by its terms. I will participate in both the plein air paint-out and the exhibit/sale. The Frame Shop will handle all sales of artwork produced during the event until it closes October 10, 2010. A 30% commission on all Lewis and Clark Trail works sold will be retained.

MPAA assumes no responsibility for lost, damaged or stolen items. The undersigned discharges the Lewis and Clark Trail Paint out, MPAA and The Frame Shop of any and all claims, damages and suits from damages or loss to the undersigned's property during the event. The undersigned agrees to abide by the rules established by the Lewis and Clark Trail committee. Anyone not in compliance will be suspended from future participation and is subject to removal with no refund of registration fee.

Signature

Date

SEND TO: MPAA - Lewis and Clark Trail
506 Wheatgrass Road
Stevensville, MT 59870

Email: info@montanaprofessionalartistsassoc.com

Phone: (406) 777-0553